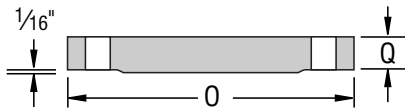


# BLIND FLANGES



NOM. PIPE SIZE	150 LB.		300 LB.		400 LB.		600 LB.	
	O	Y <sup>(1)</sup>	O	Y <sup>(1)</sup>	O	Y <sup>(2)</sup>	O	Y <sup>(2)</sup>
1/2	3 1/2	7/16	3 3/4	9/16	For sizes 3 1/2	3 3/4	9/16	
3/4	3 7/8	1/2	4 5/8	5/8		4 5/8	5/8	
1	4 1/4	9/16	4 7/8	1 1/16		4 7/8	1 1/16	
1 1/4	4 5/8	5/8	5 1/4	3/4	and smaller use 600 LB. Standard	5 1/4	1 3/16	
1 1/2	5	1 1/16	6 1/8	1 3/16		6 1/8	7/8	
2	6	3/4	6 1/2	7/8		6 1/2	1	
2 1/2	7	7/8	7 1/2	1	600 LB. Standard	7 1/2	1 1/8	
3	7 1/2	1 5/16	8 1/4	1 1/8		8 1/4	1 1/4	
3 1/2	8 1/2	1 5/16	9	1 3/16		9	1 3/8	
4	9	1 5/16	10	1 1/4	10	1 3/8	10 3/4	1 1/2
5	10	1 5/16	11	1 3/8	11	1 1/2	13	1 3/4
6	11	1	12 1/2	1 7/16	12 1/2	1 5/8	14	1 7/8
8	13 1/2	1 1/8	15	1 5/8	15	1 7/8	16 1/2	2 3/16
10	16	1 3/16	17 1/2	1 7/8	17 1/2	2 1/8	20	2 1/2
12	19	1 1/4	20 1/2	2	20 1/2	1/4	22	2 5/8
14	21	1 3/8	23	2 1/8	23	2 3/8	23 3/4	2 3/4
16	23 1/2	1 7/16	25 1/2	2 1/4	25 1/2	2 1/2	27	3
18	25	1 9/16	28	2 3/8	28	2 5/8	29 1/4	3 1/4
20	27 1/2	1 11/16	30 1/2	2 1/2	30 1/2	2 3/4	32	3 1/2
22	29 1/2	1 13/16	33	2 5/8	33	2 7/8	34 1/4	3 3/4
24	32	1 7/8	36	2 3/4	36	3	37	4
26	34 1/4	2	38 1/4	3 1/8	38 1/4	3 1/2	40	4 1/4
30	38 3/4	2 1/8	43	3 5/8	43	4	44 1/2	4 1/2
34	43 3/4	2 5/16	47 1/2	4	47 1/2	4 3/8	49	4 3/4
36	46	2 3/8	50	4 1/8	50	4 1/2	51 3/4	4 7/8
42	53	2 5/8	57	4 5/8	57	5 1/8	58 3/4	5 1/2

(1) The 1/16" raised face **is** included in Thickness, "Q".

(2) The 1/4" raised face **is not** included in Thickness, "Q".